

# JOSKIN



[www.joskin.com](http://www.joskin.com)

# BETIMAX RDS

COMFORT, SAFETY AND QUALITY



A complete range with many equipment options possible

## Models with Reclining System

The JOSKIN Betimax RDS has been developed on the advice of experienced veterinarians and cattle breeders to achieve the **highest possible level of comfort and ease of use.**

The dimensions of the JOSKIN livestock trailers also comply with the **European standards.**



## Galvanised Protection and 3-Component Resin Floor (2K + rubber)



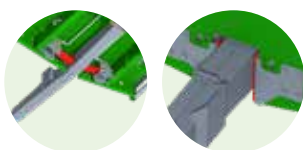
- (A) Body in QST 420 steel (thickness: 4 mm).
- (B) Core penetration of zinc in steel at 450°C.
- (C) 70-micron galvanising with special treatment before and after immersion in the zinc bath.
- (D) Sanding, sandblasting and primer coat.
- (E) "2-component + rubber" resin (thickness: approx. 12 mm): flexible, non-slip and soundproofing.

A **printed protection** can replace the galvanisation. The standard floor of the painted Betimax is in **chequered plate**, but it can be in resin as an option.

## Hitch and Running Gear



**Narrow drawbar** for easy manoeuvring.  
**Sprung** drawbar and **adjustable slide** with self-lubricating ertalon.



**Shock-absorbing Hydro-Tandem suspension** with nitrogen ball + anti-fall safety.

**Automatic inertia brakes in accordance with European standards** available for tractors without air brakes.



## Safety for the USER

- ✓ The **galvanised colour** is part of the usual environment of the animals, which **tranquillise** them during loading.
- ✓ All outer fences are fitted with an **adjustable suspension**.
- ✓ The rail-mounted inner fence locks **automatically**.
- ✓ All fences are fitted with **anti-noise and anti-vibration rubber silentblocks**.
- ✓ The user can open the rail-mounted inner fence **from the outside**.
- ✓ The rear doors can be opened in complete safety for the user (protected from animals thanks to the **second closed door** when they are getting out of the trailer) and they are closed **semi-automatically by lever or lock with 100% secure locking (patented system)**.





## Inner and Outer Equipment Available for all Models

Scan the QR code and configure your livestock trailer in a few clicks!



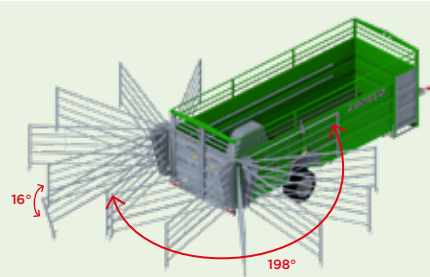
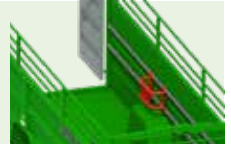
**Door locking**  
at 90°, 115°, 130° or 265°.



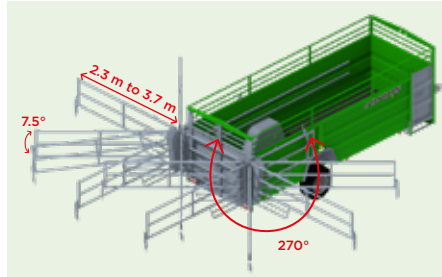
**Rear safety fences** to allow air to circulate (ideal in the event of long stops and transport in hot weather conditions).



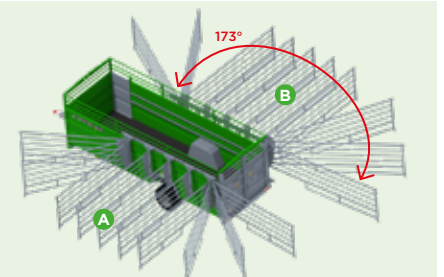
**Protection of animals** against wheel recesses.



**198° pivoting fences** of 3.5 m or 4.5 m long.



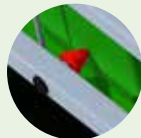
**270° pivoting fold-back fences** with rear (against door) or side storage, expendable from 2.27 m to 3.67 m.



**Rail-mounted fences pivoting at 173°** of 3.5 m (A) or 4.5 m (B) long.



**Adjustable suspension** on all outer fences.



**Anti-vibration silentblock** on all inner and outer fences.

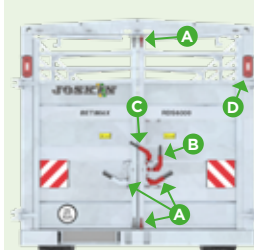


**Rail-mounted inner fence** with locking at intervals of 640 to 980 mm depending on the model, suitable for small and large animals. Door opening from inside or outside.

(A) Storage position of the partition against the front wall of the livestock trailer.

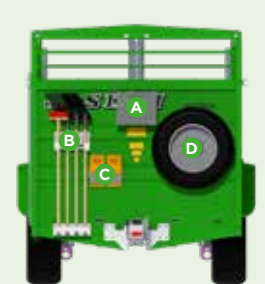


**Single inner fence with rods**, 3 or more positions depending on the use.



**100% secure automatic locking**©

- (A) Double lock above and under securely locked.
- (B) Neutral position for automatic closing.
- (C) "Door released" position for opening.
- (D) Lights out of reach of the animals (option).



**Wide choice of outer equipment.**

- (A) Tool box.
- (B) 4-slot holder for handle tools.
- (C) Wheel chocks.
- (D) Spare wheel on stand.

## Safety for the ANIMALS

- ✓ The doors of the livestock trailer are **100% secure** during road travel, thanks to an **automatic locking system** (patented system).
- ✓ The floor of the galvanised Betimax is covered with a **flexible, non-slip and soundproofing resin coating** for a safer and more comfortable transport of the animals.
- ✓ The drawbar and axles (Hydro-Tandem) are fitted with a **suspension**.
- ✓ The risk of injury when the animals are unloaded is reduced to a minimum thanks to the **reclining system** with a low step (17 cm) and the **wide opening** of the rear doors with **2 inner fences (slides)**.
- ✓ It is possible to equip the Betimax with rear fences to **allow air to circulate and oxygenate the animals** in the event of hot weather, especially during long stops.
- ✓ All JOSKIN livestock trailers are **anti-noise** so as not to frighten animals.





## WIDE RANGE OF LIVESTOCK TRAILERS

- ✓ JOSKIN livestock trailers are designed and engineered to meet CE standards and ensure a maximum comfort to animals.
- ✓ Reclining range from 5 to 9 m.
- ✓ Hydraulic or fixed axle(s).
- ✓ After-sales service: 3-year warranty and individualised parts book.



- ✓ Galvanised protection
- ✓ Resin floor



- ✓ Green painted protection
- ✓ Floor in chequered plate

