

JOSKIN

EN

CARGO-LIFT



www.joskin.com

CARGO-LIFT CL from 8 to 22 T
CARGO-LIFT CLX from 20 to 30 T

THE JOSKIN QUALITY: 6 Keys to Success



Production site (Belgium)

Strength of EXPERIENCE

FOUNDED IN 1968, the JOSKIN family business became A LEADER in the design and manufacture of agricultural machines. SPREAD OVER BELGIUM, POLAND AND FRANCE on a total surface area of almost 150,000 m², the JOSKIN production sites are EXPORTING TO MORE THAN 60 COUNTRIES.



TECHNICAL SKILLS within

VERY MODERN AND HIGHLY PRECISE TECHNIQUES are used: dynamic 3D simulation, automated lasers, folding presses, high tensile steel, hot-dip galvanization, automated continuous weldings.



Buy with CONFIDENCE



See conditions on www.joskin.com





Technical Centre (Poland)



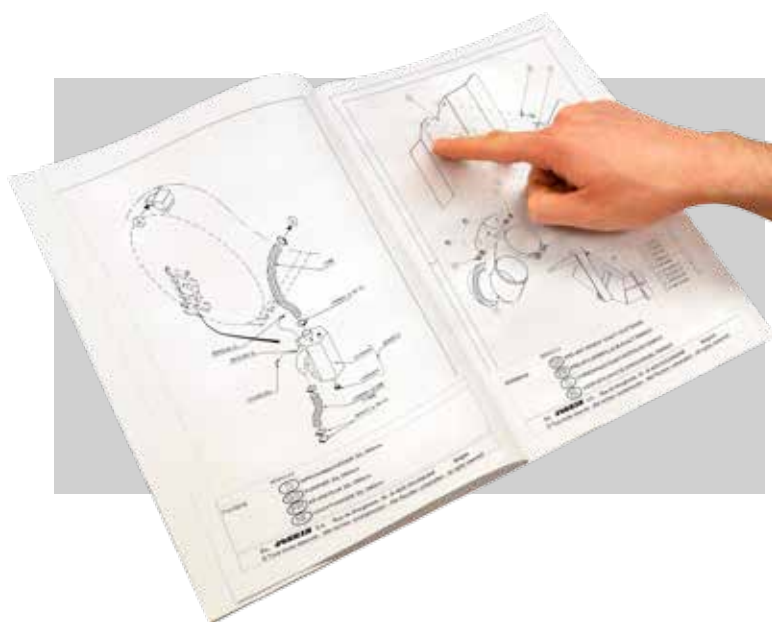
RESEARCH and DEVELOPMENT

JOSKIN has its own industrial design offices and 3D static and dynamic engineering software. The production is standardized as much as possible in order to ensure a precise manufacturing and a deadline compliance, while proposing hundreds of options! Our technicians and dealers are constantly trained in our technical centres.



At the SERVICE of our customers

Our great strength: the AVAILABILITY OF SPARE PARTS at any time and anywhere. Thanks to our permanent stocks, we send your parts as quickly as possible. The JOSKIN dealers undertake to have a stock of the most important spare parts of the machines.



Individualized PARTS book

The PARTS BOOK and the USER'S MANUAL are provided in your language when purchasing a machine. The parts book includes drawings and references of the components mounted on your machine. Even years later, spare parts can be ordered efficiently!



A professional's opinion

The family business Derks, located in the West of the Netherlands, is a loyal customer of JOSKIN. "We bought a JOSKIN Cargo-LIFT CLX hook-lift system of 6.80 m with Mitas 650/55R26.5 wheels that we are using for construction and silage works (maize and grass) as well as for the transport of grains. As strong points, we can mention its ease of use, its possibility to drive with a 200 HP tractor and its versatility. We are so happy with it that we're planning to buy new JOSKIN machines! Before this purchase, we were hesitating between a German brand and JOSKIN. But the JOSKIN model had more pump capacity and a higher speed of use. It was also easier to operate. Our good past experiences with JOSKIN, like the efficient and tested tyres remote inflating control, tipped the balance in JOSKIN's favour. Furthermore, the price was very competitive."





2 CARGO-LIFT RANGES:

CARGO-LIFT CL from 8 to 22 T
(6 MODELS: 5 DOUBLE-AXLE AND 1 TRIPLE-AXLE)

CARGO-LIFT CLX from 20 to 30 T
(6 MODELS: 3 DOUBLE-AXLE AND 3 TRIPLE-AXLE)

CL

From 8 to 22 T

Perfectly suitable compact and sturdy design. Hook-lift ideally integrated on an agricultural running gear.

D8-D12-D14

- Drawbar suspension with silent-blocks
- Hydraulic controls with direct connection to the tractor (3xDA):
 - container tipping;
 - telescopic arm;
 - container locking.
- Double-axle with parabolic leaves and wheel base of:
 - 1,160 mm on D8
 - 1,350 mm on D12
 - 1,550 mm on D14



Assisted tipping by hydraulic ram



Hook-lift system

- Telescopic front beam system (except on D8: articulated model) including the **BOLTED** lifting hook in non-deforming steel (hook height: 1,450 mm, 1,430 mm or 1,570 mm)
- Hydraulic rams integrated into the chassis
- Standard hydraulic container locking from the inside to the outside
- Assisted tipping by hydraulic ram



SPECIFICATIONS

Management and control	Direct connection / alu control box with electro-hydraulic controls
Chassis	Tubular
Tipping stabilizer	Locking on Hydro-Tandem and Hydro-Tridem (option on 3rd point)
Hook	Telescopic front beam system (articulated on D8)
Brakes	Hydraulic and/or air brakes available, air brakes on T22
Required hydraulics	Standard: min. 180 bar with direct connection to the tractor As an option: 230 bar with pump

Double truck-type lights



Thermoplastic mudguards

Design of the telescopic arm with diagonal welding and reinforcement, which makes it way stronger.

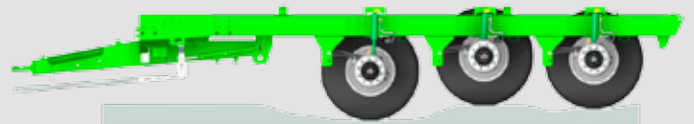
D18

- Hydropneumatic hitching suspension
- Double-axle with parabolic leaves and 1,550 mm wheel base
- Complete electro-hydraulic control of the machine (entry block, control of the container tipping, telescopic arm, container locking and drawbar with alu control box SA + FR)



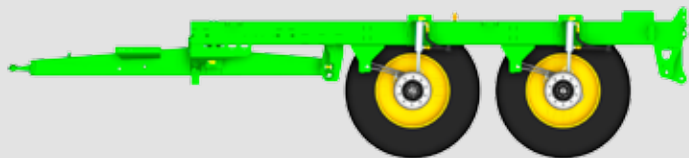
T22

- Same as D22
- Double self-steering system (first and last axles) with hitching yoke, including quick coupling to the tractor and aligning set-up unit including: 2 nitrogen accumulators, oil tank, hand pump and pressure gauge
- Hydro-Tridem
- Air brakes
- Front lifting axle
- Complete electro-hydraulic control:
 - control of the container tipping;
 - telescopic arm;
 - container locking with alu control box (SA+FR);
 - hydropneumatic drawbar - front axle.



D22

- Same as D18
- Tipping stabilizer
- Hydro-Tandem



Hydraulic locking of the container



Shot-blasting before painting, Primer Ester Epoxy (2 K) and finishing lacquer.

Ø 50 mm bolted flat eyelet (model depending on the country)

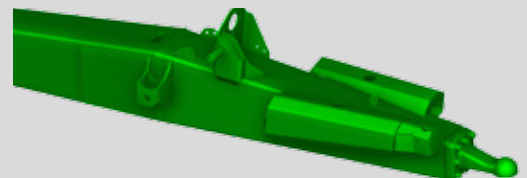
Tubular chassis shaped by the hook

Air and/or hydraulic brakes available



Drawbar

For optimal ergonomics of the machine, JOSKIN proposes the "arrow" type drawbar.



Hydropneumatic suspension D18-D22-T22

Mounted on a hydraulic ram with one or two nitrogen accumulators (loaded and unloaded positions), it offers an outstanding flexibility. The adjustable chassis slope allows to increase the wrenching force.



Silent-blocks D8-D12-D14

These rubber blocks ensure a smooth driving while keeping the traction line of the vehicle.



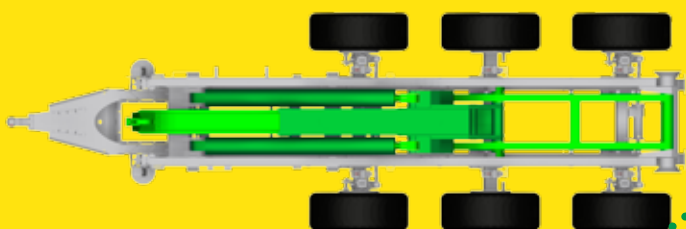
CLX

From 20 to 30 T

Designed for intensive professional use, this efficient implement offers power and reliability.

SPECIFICATIONS

Management and control	Alu control box with electro-hydraulic controls
Chassis	Tubular chassis with reinforcement in special DOMEX 690 steel - 8 mm
Tipping stabilizer	Locking on Hydro-Tandem/Hydro-Tridem
Hook	System with front telescopic beam
Brakes	Air brakes
Pump	140 l / 300 bar (standard: 3 high-flow electrovalves)



Hook-lift system

- System with front telescopic beam, including the **WELDED** lift-hook in non-deforming steel (height of welded hook: from 1,410 to 1,570 mm).
- Reinforced chassis in special Domex 690 steel of 8 mm thick on the whole length.
- Hydraulic rams integrated into the chassis.
- Standard hydraulic container locking from the inside to the outside.



VACU-CARGO LIFT

Currently, JOSKIN proposes slurry tanks that are adaptable to the Cargo-LIFT system.



VACU-CARGO LIFT MODELS

Possibilities according to chassis	5.5 m	5.9 m	6.4 m	6.6 m	6.8 m
Slurry tank	/	/	Vacu 16,000, 18,000, 20,000, 22,500 or 24,000 *		

* Sub-frame length: 6.8 m for 16,000 and 18,000 l, 7 m from 20,000 to 24,000 l.
Smaller tanks are available on request.

D20

5500 - 5900 - 6400

- Hydro-Tandem: hydraulic axle suspension with 1,550 mm wheel base



Cooling system

A radiator is installed near the hydraulic installation to cool down the oil.

Industrial hydraulic system

On the CLX models, the system is fed by an independent Load Sensing hydraulic pump of 140 l/min at 300 bar. The three functions of the hook are operated by means of 3 high-flow electrovalves.



Hydraulic pump



Hydraulic installation

Quick system

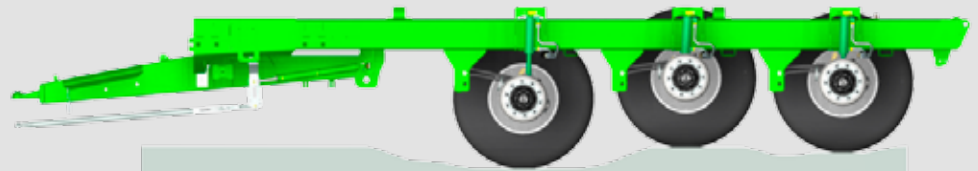
As an option, a fast unloading system with oil return to the opposite tank, when removing empty containers is available on the CLX model.



T30

6400 - 6600 - 6800

- Double self-steering system (first and last axles) with hitching yoke and aligning set-up unit including: 2 nitrogen accumulators, oil tank, hand pump and pressure gauge
- Front lifting axle
- Hydro-Tridem: hydraulic axle suspension (SA + FR) (25 cm clearance) with 1,550 mm wheel base and automatic height adjustment



Hydraulic locking of the container

Shot-blasting before painting, Primer Ester Epoxy (2 K) and finishing lacquer

Double truck-type lights

Thermoplastic mudguards

Hydraulic axle suspension

Air brakes



Wide angle P.T.O.-shaft with shear bolt

Bolted eyelet (model depending on the country)

Drawbar

For optimal ergonomics of the machine, JOSKIN proposes a drawbar with hydropneumatic suspension.

Hydropneumatic hitching suspension

Mounted on a hydraulic ram with two nitrogen accumulators, it offers an outstanding flexibility.



CARGO-LIFT

Options

Suited to road and agricultural transport, this version of the hook system used on trucks meets contractors' need of ever more versatile transports.

The Cargo-LIFT allows to significantly increase the productivity of both staff and machines: thanks to its quick implement change, it is perfectly possible to remove the implement from the truck and lay it down on the side of the road before loading it on the CARGO-LIFT to use it on the fields. Then, it can be set on the truck again so that it can be transferred quickly to the destination, at the appropriate time, according to the driver's and vehicle's schedule.



Implements

Your Cargo-LIFT can be fitted with several implements, such as tanks or silage bodies.



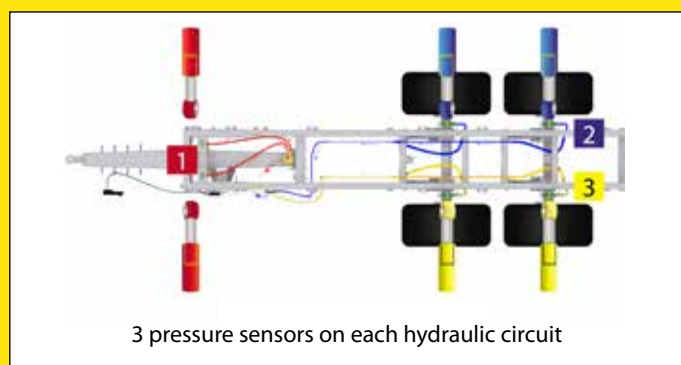
Management and control

Compact and strong alu control box to operate the hydraulic functions of the machine.



Dynamic weighing system

On model fitted with a hydraulic drawbar and suspension, a weighing system with wireless control box (sensors on the axle and drawbar suspensions) can be mounted as an option.



3 pressure sensors on each hydraulic circuit

Aluminium mudguards

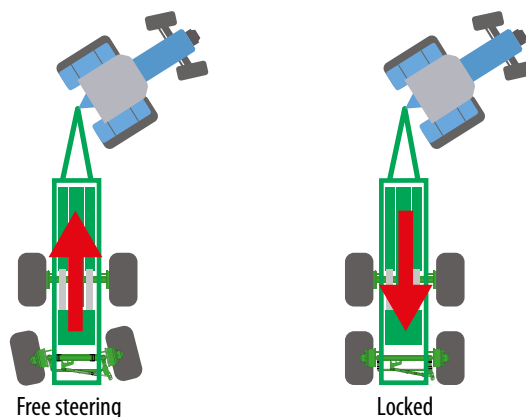
Aluminium mudguards limit projections when driving.



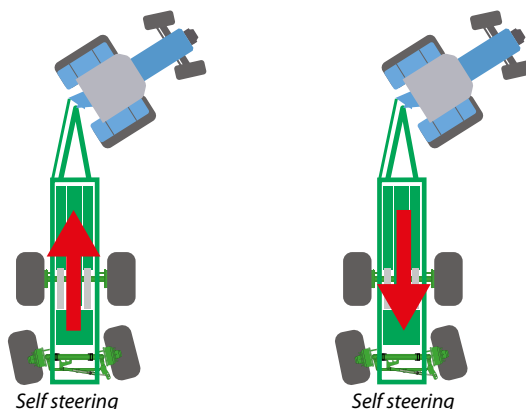
Self steering axle(s)

The rear axle of the double-axle Cargo-LIFT can, as an option, be mounted as a free steering axle (with hydraulic locking above 15 km/h) or as a self steering axle in both driving directions. The triple-axle Cargo-LIFT are standard fitted with 2 self steering axles (front and rear axles).

Free steering axle (50% steering)



Self steering axle (100% steering)

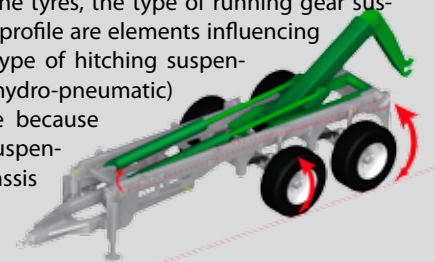


CARGO-LIFT

Tables and diagrams

Models	MIN./MAX. CONTAINER LENGTH (MM)				
	3,000 4,000	4,000 5,000	5,000 6,000	6,000 7,000	7,000 7,500
NUMBER OF AXLES					
Cargo-LIFT CL	2	2	2/3	2/3	3
Cargo-LIFT CLX			2	2/3	3

The technically permissible payload is different from the wrenching force. It depends on many factors influencing the rear height of the chassis: the lower the height, the higher the wrenching force. For instance, the diameter of the tyres, the type of running gear suspension and the ground profile are elements influencing the system power. The type of hitching suspension (silent-blocks or hydro-pneumatic) also plays a certain role because the hydro-pneumatic suspension allows to tilt the chassis downwards.



CL MODELS

	Min./Max. container length (mm)	Lifting angle	Max. wheel dimensions (mm) ⁽²⁾		Axle(s): □ (mm) - track (mm) - studs	Brakes (mm)	Stand
			Ø	Width			
			DOUBLE AXLE				
CL3600D8 ⁽¹⁾	3,000 - 4,200	41°	930	400	ADR 2x90x1900-8S	350 x 60	hydr. ⁽⁴⁾
CL4600D12 ⁽¹⁾	3,200 - 5,000	49°	1,140	500	ADR 2x100x2000-10S	350 x 60	hydr. ⁽⁴⁾
CL5000D14 ⁽¹⁾	4,200 - 5,500	47°	1,260	620	ADR 2x130x2100-10S	406 x 120	skid ⁽⁵⁾
CL5400D18 ⁽¹⁾	4,400 - 6,000	54°	1,260 ⁽³⁾	620 ⁽³⁾	ADR 2x130x2100-10S	406 x 120	skid ⁽⁵⁾
CL5800D22 ⁽¹⁾	4,700 - 6,500	55°	1,380	700	ADR 2x150x2100-10S	420 x 180	skid ⁽⁵⁾
CL6500D22 ⁽⁶⁾	5,700 - 7,500	54°	1,380	700	ADR 2x150x2100-10S	420 x 180	skid ⁽⁵⁾
TRIPLE AXLE							
CL6500T22 ⁽¹⁾	5,700 - 7,500	54°	1,380	700	ADR 3x130x2100-10S	406 x 120	skid ⁽⁵⁾

⁽¹⁾The first 2 letters indicate the Cargo-LIFT CL range, the 4 numbers the length of the "LIFT" chassis (in mm), the letter indicates the number of axles and the last two numbers the technically permissible payload (in t). ⁽²⁾Dimensions for a standard machine without steering axle (except if the steering axle is part of the standard equipment of the machine). ⁽³⁾With hydraulic suspension (ref. 3180): max. wheel Ø of 1,350 mm and max. width of 700 mm. ⁽⁴⁾Hydraulic stand with direct connection. ⁽⁵⁾Hydraulic skid with direct connection to the tractor (DA). ⁽⁶⁾The rear axle will be set in its rearmost position in order to ensure a sufficient support when loading the container. In order to avoid a too big load on the eyelet in transport position, the maximum permissible total load will be limited - for further information, please contact your representative.

	CL3600D8	CL4600D12	CL5000D14	CL5400D18	CL5800D22	CL6500D22	CL6500T22
A	3,780 mm	3,335 mm	3,847 mm	4,074 mm	4,273 mm	5,063 mm	5,063 mm
B	/	1,020 mm	1,020 mm	1,140 mm	1,300 mm	1,300 mm	1,300 mm
C	400 mm	864 mm	916 mm	1,109 mm	904 mm	568 mm	904 mm
D	3,900 mm	4,800 mm	5,300 mm	5,580 mm	5,780 mm	6,545 mm	6,577 mm
E	1,577 mm	1,670 mm	1,870 mm	1,873 mm	2,073 mm	2,662 mm	2,073 mm

CLX MODELS

	Min./Max. container length (mm)	Lifting angle	Max. wheel dimensions (mm) ⁽²⁾		Axle(s): □ (mm) - track (mm) - studs	Brakes (mm)	Stand
			Ø	Width			
			DOUBLE AXLE				
CLX5500D20 ⁽¹⁾	4,000 - 6,200	55°	1,500	750 ⁽³⁾	ADR 2x150x2100-10S	420 x 180	skid ⁽⁵⁾
CLX5900D20 ⁽¹⁾	4,400 - 6,600	49°	1,500	750 ⁽³⁾	ADR 2x150x2100-10S	420 x 180	skid ⁽⁵⁾
CLX6400D20 ⁽¹⁾	4,900 - 7,100	49°	1,500	750 ⁽³⁾	ADR 2x150x2100-10S	420 x 180	skid ⁽⁵⁾
TRIPLE AXLE							
CLX6400T30 ⁽¹⁾	4,900 - 7,100	51°	1,400	720	ADR 3x150x2100-10S	420 x 180	hydr. ⁽⁴⁾
CLX6600T30 ⁽¹⁾	5,100 - 7,300	48°	1,400	720	ADR 3x150x2100-10S	420 x 180	hydr. ⁽⁴⁾
CLX6800T30 ⁽¹⁾	5,300 - 7,500	47°	1,400	720	ADR 3x150x2100-10S	420 x 180	hydr. ⁽⁴⁾

⁽¹⁾The first 2 letters indicate the Cargo-LIFT CLX range, the 4 numbers the length of the "LIFT" chassis (in mm), the letter indicates the number of axles and the last two numbers the technically permissible payload (in t). ⁽²⁾Dimensions for a standard machine without steering axle (except if the steering axle is part of the standard equipment of the machine). ⁽³⁾With steering axle, the max. width is 720 mm. ⁽⁴⁾Double hydraulic stand with direct connection to the tractor (DA). ⁽⁵⁾Hydraulic skid with direct connection to the tractor (DA).

	CLX5500D20	CLX5900D20	CLX6400D20	CLX6400T30	CLX6600T30	CLX6800T30
A	3,972 mm	4,372 mm	4,622 mm	4,622 mm	5,150 mm	5,150 mm
B	1,200 mm	1,200 mm	1,450 mm	1,450 mm	1,450 mm	1,650 mm
C	1,252 mm	852 mm	1,081 mm	1,081 mm	858 mm	1,269 mm
D	5,500 mm	5,900 mm	6,400 mm	6,400 mm	6,600 mm	6,800 mm
E	1,600 mm	2,000 mm	2,000 mm	2,000 mm	2,300 mm	2,100 mm

Non contractual data.

JOSKIN

WIN PACK

"Win Pack" Advantages

To combine quality manufacturing and shortened delivery time, JOSKIN proposes WIN PACK machines. They are:

- reliable and of high quality thanks to the standardized manufacturing process;
- adapted to your farm and affordable;
- in stock or rapidly available;
- fitted with pieces of equipment that were tested in real working conditions;
- modular given the many options.



TECHNICAL CENTRE

Visit us. Experience the JOSKIN production!



www.joskin.com

rue de Wergifosse, 39 • B-4630 Soumagne - BELGIUM • E-mail: info@joskin.com • Tel.: +32 (0) 43 77 35 45

Your local JOSKIN partner

